

FUGOLASTIC

Liquid polymer admixture for the Keracolor line of products



WHERE TO USE

Fugolastic is used as a substitute for water, to mix the cement-based grouts of the **Keracolor** range, to improve the grout adhesion and mechanical strength, and to reduce porosity and absorption. The system is CG2 classified, improved cementitious grout, according to EN 13888.

Some application examples

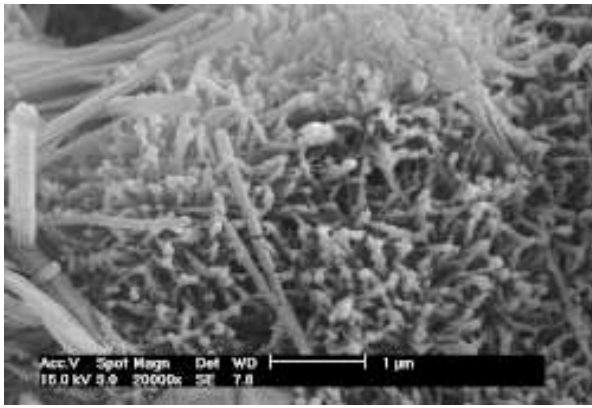
- Grouting façades, balconies, terraces and swimming pools.
- Grouting floors subject to heavy traffic, and when it is expected that grouts undergo particular stress.
- Repairing old, ruined or badly grouted ceramic tiles.
- Grouting floors and walls on particularly flexible substrates (wood, plywood, etc.).
- Grouting ceramic or glass mosaic floor and wall coverings.
- Grouting floors and walls subject to frequent cleaning, also with jet-vapour (gym and swimming pool changing rooms, mess-rooms etc.).
- Grouting terracotta floors or other types of tiles to be polished when installing.

TECHNICAL CHARACTERISTICS

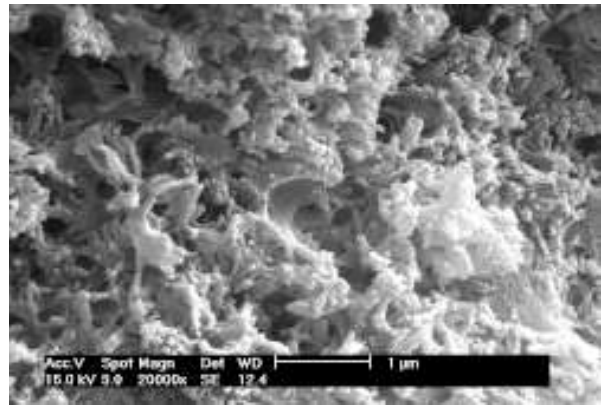
Fugolastic is a water dispersion of synthetic polymers, which when mixed with cement based products for grouting ceramic tiles (**Keracolor FF** or **GG**) endows them with the following properties:

- Improved compactness and greater resistance to abrasion.
- Optimal hydration of the cementitious binder and improved adhesion to the edges of the tiles.
- Less porosity (when comparing under an electronic microscope, photograph of grouts with **Keracolor** mixed with water and one mixed with **Fugolastic**, it can be observed that in the second photograph the needle-shaped cement crystals are covered with a polymer) and less absorption, consequently cleaning the grouts is easier.

Fugolastic can be mixed with all **Keracolor** colours and grain sizes without altering the colour, in fact it fixes the colours permanently.



Microphotograph of a cementitious matrix obtained by mixing **Keracolor** with water



Microphotograph of a cementitious matrix obtained by mixing **Keracolor** and **Fugolastic**. Notice the more compact structure due to the presence of the polymer in the interstice

RECOMMENDATIONS

- Never add water to the mixture of **Keracolor** prepared with **Fugolastic**.
- Do not use too fluid mixtures to avoid the appearance of **Fugolastic** or colour over the surface.
- Do not use **Fugolastic** in the **Keracolor** mixture for grouting terracotta floors, porous or rough surfaces. Make a sample test when grouting polished porcelain tiles, to verify its cleanability.
- The **Keracolor** mixture with **Fugolastic** cannot be used for flexible expansion joints or subject to movement.

APPLICATION PROCEDURE

Briefly shake **Fugolastic** before using. Pour into a clean container the needed amount and add **Keracolor**. Use 28-30 parts by weight of **Fugolastic** for 100 parts by weight of **Keracolor FF** or 18-20 parts by weight of **Fugolastic** for 100 parts by weight of **Keracolor GG**. Use 33-35 parts by weight of **Fugolastic** for 100 parts by weight of **Keracolor SF**.

The preparation, application, and finishing instructions for the grouts with **Keracolor** are described in the relevant technical data sheets.



Grouting an external klinker tile floor with **Keracolor GG** mixed with **Fugolastic**



Grouting glass mosaic with **Keracolor FF** mixed with **Fugolastic**



Terracotta floor polished in situ, grouted with **Keracolor GG** mixed with **Fugolastic**

SET TO LIGHT FOOT TRAFFIC

Floors are set to light foot traffic after 24 hours.

READY FOR USE (with hypothetical curing at +23°C and 50% R-H.)

Floors are ready for traffic after 3 days. Basins and swimming pools can be filled 7 days after grouting.

Cleaning

Clean tools and containers with plenty of water before **Keracolor** hardens.

CONSUMPTION

The consumption of **Fugolastic** depends on the consumption of **Keracolor** (see the relevant data sheets).

PACKAGING

25, 10, 5, and 1 kg plastic drums.

STORAGE

Fugolastic can be stored for at least 24 months in a dry place in original packaging. Protect **Fugolastic** from frost during transportation and storage.

SAFETY INSTRUCTIONS FOR PREPARATION AND APPLICATION

Instructions for the safe use of our products can be found on the latest version of the Safety Data Sheet, available from our website www.mapei.com.

PRODUCT FOR PROFESSIONAL USE.

TECHNICAL DATA (typical values)

PRODUCT IDENTITY

Consistencyliquid:	liquido
Colour:	white
Density (g/cm ³):	1.01
pH:	10
Dry solids content (%):	10

APPLICATION DATA (at +23°C and 50% R.H.)

Mixed with:	Keracolor FF	Keracolor GG	Keracolor SF
Mixing ratio:	28-30 : 100	18-20 : 100	33-35 : 100
Consistency of mix:	fluid paste	fluid paste	fluid paste
Density of mix (kg/m ³):	1.900-2.000	1.900-2.000	1.900-2.000
pH of mix:	approx. 13	approx. 13	approx. 13
Pot life:	approx. 2 hours		
Application temperature:	from +5°C to +35°C		
Waiting time before finishing:	10-20 minutes		
Set to light foot traffic:	24 hours		
Ready for use:	3 days (7 days for tanks and swimming pools)		

FINAL PERFORMANCE OF KERACOLOR MIXED WITH FUGOLASTIC

Flexural strength after 28 days (N/mm²) (EN 12808-3):
Compressive strength after 28 days (N/mm²) (EN 12808-3):
Flexural strength after freeze/thaw cycles (N/mm²) (EN 12808-3):
Compressive strength after freeze/thaw cycles (N/mm²) (EN 12808-3):
Abrasion resistance (loss in mm³) (EN 12808-2):
Shrinkage (mm/m) (EN 12808-4):
Water absorption after 30' (g) (EN 12808-5):
Water absorption after 240' (g) (EN 12808-5):

in compliance with European norm EN 13888 as CG2

Resistance to alkali:

excellent

Resistance to oils:

excellent (poor to vegetable oils)

Resistance to solvents:

excellent

Resistance to acids:

good if pH > 3

Temperature when in use:

from -30°C to +80°C

WARNING

Although the technical details and recommendations contained in this product data sheet correspond to the best of our knowledge and experience, all the above information must, in every case, be taken as merely indicative and subject to confirmation after long-term practical application; for this reason, anyone who intends to use the product must ensure beforehand that it is suitable for the envisaged application. In every case, the user alone is fully responsible for any consequences deriving from the use of the product.

Please refer to the current version of the Technical Data Sheet, available from our website www.mapei.com

LEGAL NOTICE

The contents of this Technical Data Sheet ("TDS") may be copied into another project-related document, but the resulting document shall not supplement or replace requirements per the TDS in force at the time of the MAPEI product installation. The most up-to-date TDS can be downloaded from our website www.mapei.com. ANY ALTERATION TO THE WORDING OR REQUIREMENTS CONTAINED OR DERIVED FROM THIS TDS EXCLUDES THE RESPONSIBILITY OF MAPEI.

133-5-2023 en (IT)

Any reproduction of texts, photos and illustrations published here is prohibited and subject to prosecution

